



50W to 250W  
SSPB-2000C™ series

### Features

- Converts L-Band to C-Band (see table A)
- Integrated amplifier with an output power of 50W to 250W (see table A)
- Phase-locked oscillator to external 10MHz reference
- High linearity (low intermodulation products)
- Weatherproof package
- Remote Monitor & Control
- Protection against thermal runaway and out-of-lock conditions
- Output sample monitoring port
- Field Replaceable Power Supply
- Built-in Harmonic Filter
- Compact packaging
- CE Marking

### Overview

The SSPB-2000C™ series are hub-mount up-converter transmitters, operating in the C-Band. The SSPB-2000C™ is an integrated unit, complete with power supply, phase-locked oscillator, mixer, filter and cooling mechanism. Intended for outdoor operation, the SSPB-2000C™ provides the utmost in convenience and efficiency. They are the smallest fully integrated units on the market today. Other SSPBs are also available for diverse powers or for operation at other up-link frequencies.

The design of these units is based on Advantech AMT™ industry proven reliable solid-state high power amplifiers. Built-in design features and assembly methods incorporated with efficient combining techniques result in an amplifier with exceptional linearity and operating efficiency. The use of high efficiency power supply and conservative thermal designs contribute to the trouble-free operation of the amplifier.

Built-in microprocessor controller provides the capability for serial port interfaces (RS232/485) for remote monitoring and control.

### Application

The SSPB-2000C™ series convert an L-Band signal to the C-band frequency (see table A). Designed for C-Band satellite up-link applications, the SSPB C series are available in output power from 10W to 1000W. For higher power Advantech provides phase-combined systems. The SSPB-2000C™ series are fully integrated units with up to 250W output power designed for mounting outdoors, near the hub of an antenna.

### Redundancy

With the addition of the appropriate waveguide and switch kit, The SSPB-2000C series converters can be easily converted for the operation in a redundant configuration with full remote Monitor and Control capability of the redundant system via serial interface.

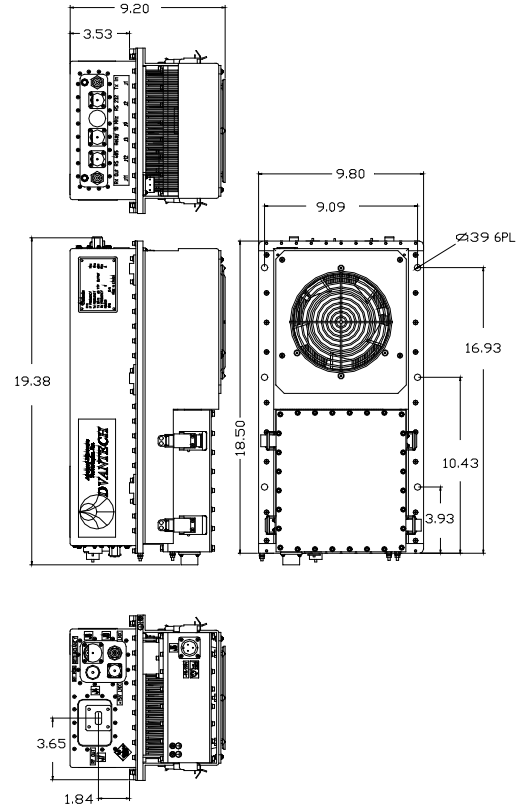


Table A

Band	RF Band (GHz)	IF Band (MHz)	Output Power (W)	LO (GHz)
CL	4.400 – 5.000	950 – 1550	60 - 200	3.450
CP	6.425 – 6.725	1025 – 1325	50 - 200	5.400
CI	6.725 – 7.025	1225 – 1525	50 - 200	5.500
CR	5.725 – 6.025	950 – 1450	60 - 250	4.775
CS	5.850 – 6.425	950 – 1525	60 - 250	4.900
CX	5.850 – 6.725	950 – 1825	50 - 200	7.675

\*Other frequency sub-bands are available. Please consult factory.

### Options

- Internal High Stability 10 MHz Reference
- Redundant system
- Remote M&C panel (Ethernet port optional)

### Accessories

- Redundancy Kit
- Mounting Frame

# C-Band Hub-mount SSPB

Technical Specifications	50W	60W	80W	100W	125W	150W	200W	250W	
<b>Electrical Characteristics</b>									
Availability in this series									
CS, CR	√	√	√	√	√	√	√	√	
CL	√	√	√	√	√	√	√	√	
CX, CI, CP	√	√	√	√	√	√	√	√	
Output power (P <sub>SAT</sub> ) (dBm)	+47	+48	+49	+50	+51	+52	+53	+54	
Output power (P1dB) min. (dBm)	+46	+47	+48	+49	+50	+51	+52	+53	
Conversion gain @ maximum setting at ambient temperature	67 dB	68 dB	69 dB	70 dB	71 dB	72 dB	73 dB	74 dB	
Gain adjustment range	20 dB								
Input/Output frequency range	See table A on front page								
Frequency sense	Non-inverting except for CX band (5.85 GHz – 6.725 GHz)								
Max input power without damage	+10 dBm								
Gain flatness	±2.0 dB, max over full band, 0.3 dB/10 MHz at 25°C								
Gain variation over temperature	±1.5 dB over full operating range								
Gain variation over 24 hours	±0.25 dB max at constant temperature & drive level								
Input return loss	18 dB								
Output return loss	19 dB								
Noise power density	-70 dBm/Hz, max in TX band -140 dBm/Hz, max in RX band								
Spurious at rated power	-60 dBc, max								
Harmonics at rated power	-70 dBc, max								
AM/PM conversion at rated power	2.5°/dB max. at P1dB, 1°/dB max. at 3 dB back-off								
Third order IMD (2 tones)	-26 dBc, max at 3 dB back-off from P1 dB								
Local Oscillator frequency (LO)	See table A on front page								
LO leakage	-20 dBm								
Phase noise	-50 dBc/Hz at 10Hz	-75 dBc/Hz at 1000Hz	-95 dBc/Hz at 100 kHz	-65 dBc/Hz at 100Hz	-85 dBc/Hz at 10 kHz	-105 dBc/Hz at 1 MHz			
Group delay: (over any 40 MHz)	Linear		0.02 ns /MHz, max						
	Parabolic		0.003 ns/MHz <sup>2</sup> , max						
	Ripple		1 nsec p-p, max						
<b>Reference (auto-switching)</b>									
<i>Note: In case external reference is not provided, the unit will automatically switch to internal reference. For 1:1 redundant operation, internal 10MHz reference is recommended</i>									
Reference frequency	10 MHz								
Reference frequency phase noise	-115 dBc/Hz at 10 Hz		-150 dBc/Hz at 10 kHz		-135 dBc/Hz at 100 Hz			-160 dBc/Hz at 100 kHz	
	-148 dBc/Hz at 1000 Hz								
Reference frequency level	0 dBm ± 5 dB								
<b>Power Requirements</b>									
AC input voltage	110 /220 VAC Auto ranging (47-63 Hz)								
Power consumption (nom.) (W)	400W	600W	800W	900W	1000W	1200W	1300W	1500W	
<b>Mechanical Characteristics</b>									
Dimensions (L x W x H)	19.38"x 9.80" x 9.20" (49.22 x 25.40 x 23.36 cm)								
Weight	44 lbs (20 kg)						48.50 lbs (22 kg)		
Interfaces:	RF input	N Type (Female)	Redundancy	MS3112E16-26P	RF output CPR137 contact (for CL series – CPR 187)				
	Relay port	MS3112E12-10P	RS-232	MS3112E10-6P					
	AC Line	MS3102R16-10P	RS-485	MS3112E10-6P					
<b>Environmental Conditions</b>									
Temperature:	Operating	-30°C to +55°C; Option 1: -40°C to +55°C; option 2: -50°C to +50°C							
	Storage	-55°C to +85°C							
Humidity	100%, condensing								
Altitude	10,000' AMSL, de-rated 2°C/1,000' from AMSL								

**NORTH AMERICA  
USA**  
Tel: +1 703 659 9796  
Fax: +1 703 635 2212  
info.usa@advantechwireless.com

**CANADA**  
Tel: +1 514 420 0045  
Fax: +1 514 420 0073  
info.canada@advantechwireless.com

**EUROPE  
UNITED KINGDOM**  
Tel: +44 1480 357 600  
Fax: +44 1480 357 601  
info.uk@advantechwireless.com

**RUSSIA & CIS**  
Tel: +7 495 971 59 18  
info.russia@advantechwireless.com

**INDIA**  
Tel: +91 33 2415 5922  
info.india@advantechwireless.com

**SOUTH AMERICA**  
Tel: +1 514 420 0045  
Fax: +1 514 420 0073  
info.latam@advantechwireless.com

**BRAZIL**  
Tel: +55 11 3054 5701  
Fax: +55 11 3054 5701  
info.brazil@advantechwireless.com

An ISO 9001 : 2008 Company



Ref.: PB-SSPB-C-50-250-13150